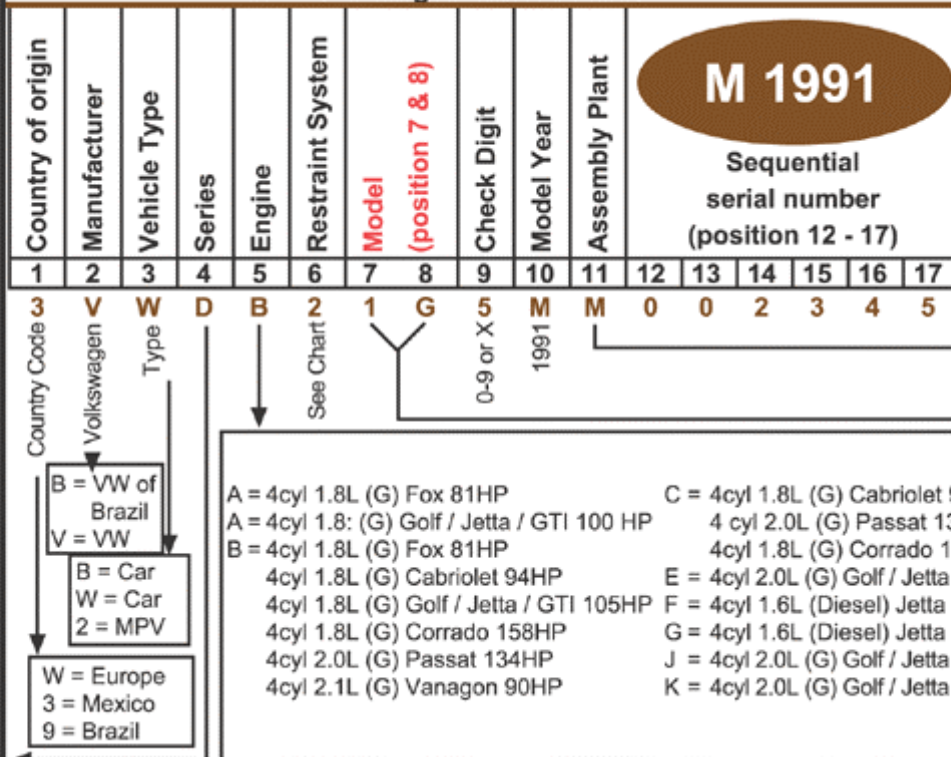


1991 Volkswagen V.I.N. decoder

SERIES:

- B = Fox 2dr Economy
Golf 2dr GL
- C = Cabriolet Custom
- D = GTI 2dr 8Valve
Cabriolet Carat
Corrado Sport
- E = Cabriolet Etienne
Aigner
- F = Passat GL
Golf 4dr GL
- G = Passat GL Wagon
Fox 4dr GL
- H = GTI 2dr 16Valve
- M = Jetta 2dr Custom
- R = Jetta 4dr Custom
- T = Jetta 4dr GLI
16Valve
Vanagon Multi-van
- Y = Vanagon Bus
- Z = Vanagon Camper



PLANT:

- E = Emden
- G = Graz
- H = Hannover
- K = Osnabrueck
- M = Mexico
- P = Brazil
- W = Wolfsburg

'98 & Prior Restraints:

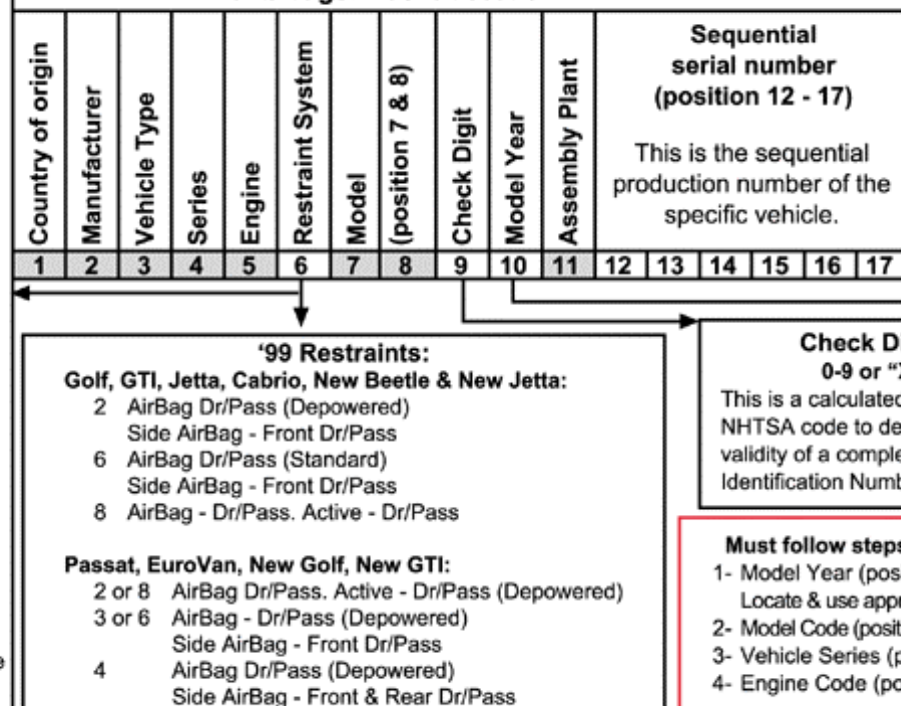
- 0 Active - Dr/Pass.
- 2 Passive
W/manual lap.
- 4 ELRA
W/manual lap.
- 5 AirBag - Dr.
Active - Dr/Pass.
- 6 AirBag - Dr/Pass.
Side AirBag Front
Dr/Pass.
Active - Dr/Pass.
- 8 AirBag - Dr/Pass.
Active - Dr/Pass.

NOTES:

All '98 Passat an New Beetle Vehicles are equipped with depowered AirBags.

Dr = Driver Side
Pass = Passenger Side

Volkswagen V.I.N. decoder



Model Year

- A = 1980
- B = 1981
- C = 1982
- D = 1983
- E = 1984
- F = 1985
- G = 1986
- H = 1987
- J = 1988
- K = 1989
- L = 1990
- M = 1991
- N = 1992
- P = 1993
- R = 1994
- S = 1995
- T = 1996
- V = 1997
- W = 1998
- X = 1999

1992 Volkswagen V.I.N. decoder

SERIES:

- B = Fox 2dr Base
- C = Golf 2dr GL
- D = Cabriolet Base
- E = GTI 2dr 8Valve
- F = Cabriolet Carat
- G = Corrado Sport G60
- H = Corrado 2dr SLC
- J = Passat CL
- K = Passat GL
- L = Golf 4dr GL
- M = Passat GL Wagon
- N = Fox 4dr GL
- O = GTI 2dr 16Valve
- P = Passat GLS
- Q = Passat GLX
- R = Jetta GL
- S = Jetta Carat
- T = Jetta GLI 16Valve

Country of origin	1	2	3	4	5	6	7	8	9	10	11	12	13	14	15	16	17
Country Code	V	W	H	E	2	1	G	5	0-9 or X	N	M	0	0	2	3	4	5
Manufacturer	Volkswagen																
Vehicle Type																	
Series																	
Engine																	
Restraint System																	
Model																	
Check Digit																	
Model Year																	
Assembly Plant																	

N 1992

Sequential
serial number
(position 12 - 17)

PLANT:
E = Emden
G = Graz
H = Hannover
K = Osnabrueck
M = Mexico
P = Brazil
W = Wolfsburg

MODEL:

- 1G = Golf/ Jetta/GTI
- 15 = Cabriolet
- 30 = Fox
- 31 = Passat
- 50 = Corrado

- | | |
|--|---|
| <p>A = 4cyl 1.8L (G) Fox 81HP
 A = 4cyl 1.8: (G) Golf / Jetta / GTI 100 HP
 B = 4cyl 1.8L (G) Fox 81HP
 4cyl 1.8L (G) Cabriolet 94HP
 4cyl 1.8L (G) Golf / Jetta / GTI 105HP
 4cyl 1.8L (G) Corrado 158HP
 4cyl 2.0L (G) Passat 134HP
 C = 4cyl 1.8L (G) Cabriolet 94HP
 4cyl 2.0L (G) Passat 134HP
 4cyl 1.8L (G) Corrado 158HP</p> | <p>D = 6cyl 2.8L (G) Corrado 178HP
 6 cyl 2.8L (G) Passat 172HP
 E = 4cyl 2.0L (G) Golf / Jetta / GTI 134HP
 6cyl 2.8L (G) Corrado 178HP
 6cyl 2.8L (G) Passat 172HP
 F = 4cyl 1.8L (Diesel) Jetta 59HP
 J = 4cyl 2.0L (G) Golf / Jetta / GTI 134HP
 K = 4cyl 1.8L (G) Golf / Jetta / GTI 100HP</p> |
|--|---|

Volkswagen V.I.N. decoder



Country of origin	1	2	3	4	5	6	7	8	9	10	11	12	13	14	15	16	17
Manufacturer																	
Vehicle Type																	
Series																	
Engine																	
Restraint System																	
Model																	
Check Digit																	
Model Year																	
Assembly Plant																	
Sequential serial number (position 12 - 17)																	

'98 & Prior Restraints:

- 0 Active - Dr/Pass.
- 2 Passive
- 4 ELRA
- 5 AirBag - Dr.
- 6 Active - Dr/Pass.
- 8 AirBag - Dr/Pass.

NOTES:

All '98 Passat and New Beetle Vehicles are equipped with depowered AirBags.

Dr = Driver Side
Pass = Passenger Side

'99 Restraints:

- Golf, GTI, Jetta, Cabrio, New Beetle & New Jetta:**
 - 2 AirBag Dr/Pass (Depowered)
 - 6 Side AirBag - Front Dr/Pass
 - 8 AirBag Dr/Pass (Standard)
- Passat, EuroVan, New Golf, New GTI:**
 - 2 or 8 AirBag Dr/Pass, Active - Dr/Pass (Depowered)
 - 3 or 6 AirBag - Dr/Pass (Depowered)
 - 4 Side AirBag - Front Dr/Pass
 - 4 AirBag Dr/Pass (Depowered)
 - 4 Side AirBag - Front & Rear Dr/Pass

Check Digit:

0-9 or "X"
This is a calculated digit per NHTSA code to determine the validity of a complete Vehicle Identification Number.

Must follow steps in order!

- 1- Model Year (position #10) Locate & use appropriate card.
- 2- Model Code (positions #7 & #8)
- 3- Vehicle Series (position #4)
- 4- Engine Code (position #5)

Model Year

- A = 1980
- B = 1981
- C = 1982
- D = 1983
- E = 1984
- F = 1985
- G = 1986
- H = 1987
- J = 1988
- K = 1989
- L = 1990
- M = 1991
- N = 1992
- P = 1993
- R = 1994
- S = 1995
- T = 1996
- V = 1997
- W = 1998
- X = 1999

1993 Volkswagen V.I.N. decoder

SERIES:

- A = Cabriolet Base
- B = Fox 2dr Base
Golf III 2dr GL
Cabriolet Classic
- D = GTI 2dr
- E = Corrado 2dr SLC
- F = Passat GL
Golf III 4dr GL
- G = Passat GL Wagon
- H = EuroVan CL
Passat GLS
- J = Passat GLX
- K = EuroVan GL
- M = EuroVan MV Camper
- N = Passat GLX Wagon
- R = Jetta III GL
- S = Jetta III GLS
- T = Jetta III GLX

Country of origin	Manufacturer	Vehicle Type	Series	Engine	Restraint System	Model (position 7 & 8)	Check Digit	Model Year	Assembly Plant	Sequential serial number (position 12 - 17)						
1	2	3	4	5	6	7	8	9	10	11	12	13	14	15	16	17

Country Code: **W** (Europe), **3** (Mexico), **9** (Brazil)
 Volkswagen: **V**
 Type: **2** (MPV)
 Series: **M**
 Engine: **C**
 Restraint System: **0** (See Chart)
 Model: **70**
 Check Digit: **0** (0-9 or X)
 Model Year: **P** (1993)
 Assembly Plant: **H**
 Sequential serial number: **004567**

P 1993

Sequential serial number (position 12 - 17)

PLANT:

- E = Emden
- G = Graz
- H = Hannover
- K = Osnabrueck
- M = Mexico
- P = Brazil
- W = Wolfsburg

MODEL:

- 1G = Golf III
Jetta III
GTI
- 15 = Cabriolet
- 30 = Fox
- 31 = Passat
- 50 = Corrado
- 70 = Eurovan

- A = 4cyl 1.8L (G) Fox 81HP
- B = 4cyl 1.8L (G) Fox 81HP
4cyl 1.8L (G) Cabriolet 94HP
4cyl 2.0L (G) Passat 134HP
- C = 4cyl 1.8L (G) Cabriolet 94HP
4cyl 2.0L (G) Passat 134HP
5cyl 2.5L (G) Eurovan 109HP
- D = 5cyl 2.5L (G) Eurovan 109HP
- D, E & F = 6cyl 2.8L (G) Corrado 178HP
6cyl 2.8L (G) Passat 172HP
- L = 4cyl 2.0: (G) Golf / Jetta / 115HP
- M = 6cyl 2.8L (G) Jetta 172HP
- R = 4cyl 2.0L (G) Jetta 115HP
- S = 6cyl 2.8L (G) Jetta 172HP

Volkswagen V.I.N. decoder

'98 & Prior Restraints:

- 0 Active - Dr/Pass.
- 2 Passive
W/manual lap.
- 4 ELRA
W/manual lap.
- 5 AirBag - Dr.
Active - Dr/Pass.
- 6 AirBag - Dr/Pass.
Side AirBag Front
Dr/Pass.
Active - Dr/Pass.
- 8 AirBag - Dr/Pass.
Active - Dr/Pass.

NOTES:

All '98 Passat and New Beetle Vehicles are equipped with depowered AirBags.
 Dr = Driver Side
 Pass = Passenger Side

Country of origin	Manufacturer	Vehicle Type	Series	Engine	Restraint System	Model (position 7 & 8)	Check Digit	Model Year	Assembly Plant	Sequential serial number (position 12 - 17)						
1	2	3	4	5	6	7	8	9	10	11	12	13	14	15	16	17



This is the sequential production number of the specific vehicle.

'99 Restraints:

- Golf, GTI, Jetta, Cabrio, New Beetle & New Jetta:**
 - 2 AirBag Dr/Pass (Depowered)
Side AirBag - Front Dr/Pass
 - 6 AirBag Dr/Pass (Standard)
Side AirBag - Front Dr/Pass
 - 8 AirBag - Dr/Pass. Active - Dr/Pass
- Passat, EuroVan, New Golf, New GTI:**
 - 2 or 8 AirBag Dr/Pass. Active - Dr/Pass (Depowered)
 - 3 or 6 AirBag - Dr/Pass (Depowered)
Side AirBag - Front Dr/Pass
 - 4 AirBag Dr/Pass (Depowered)
Side AirBag - Front & Rear Dr/Pass

Check Digit: 0-9 or "X"

This is a calculated digit per NHTSA code to determine the validity of a complete Vehicle Identification Number.

Must follow steps in order!

- 1- Model Year (position #10)
Locate & use appropriate card.
- 2- Model Code (positions #7 & #8)
- 3- Vehicle Series (position #4)
- 4- Engine Code (position #5)

Model Year

- A = 1980
- B = 1981
- C = 1982
- D = 1983
- E = 1984
- F = 1985
- G = 1986
- H = 1987
- J = 1988
- K = 1989
- L = 1990
- M = 1991
- N = 1992
- P = 1993
- R = 1994
- S = 1995
- T = 1996
- V = 1997
- W = 1998
- X = 1999

1994 Volkswagen V.I.N. decoder

SERIES:

- B = Golf III 2dr GL
- D = GTI 2dr VR6
- E = Corrado 2dr SLC
- F = Golf III 4dr GL
- H = EuroVan GL
- J = Passat GLX
- K = EuroVan GLS
- M = EuroVan MV Camper
- N = Passat GLX Wagon
- R = Jetta III GL
- S = Jetta III GLS
- T = Jetta III GLX

Country of origin	Manufacturer	Vehicle Type	Series	Engine	Restraint System	Model (position 7 & 8)	Check Digit	Model Year	Assembly Plant	Sequential serial number (position 12 - 17)						
1	2	3	4	5	6	7	8	9	10	11	12	13	14	15	16	17

Country Code: W
 Volkswagen: V
 Type: W
 Series: J
 Engine: F
 Restraint System: 4
 Model: 3 1
 Check Digit: 2
 Model Year: R (1994)
 Assembly Plant: E
 Sequential serial number: 0 0 5 6 7 8

R 1994

Sequential serial number (position 12 - 17)

PLANT:

- E = Emden
- G = Graz
- H = Hannover
- K = Osnabrueck
- M = Mexico
- W = Wolfsburg

MODEL:

- 1H = Golf III
- Jetta III
- GTI - VR6
- 31 = Passat
- 50 = Corrado
- 70 = Eurovan

- A = 4cyl 2.0L (G) Golf / Jetta 115HP
- B = 4cyl 2.0L (G) Golf / Jetta 115HP
- C = 4cyl 2.0L (G) Golf / Jetta 115HP
- D = 5cyl 2.5L (G) EuroVan 109HP
- F = 6cyl 1.9L (G) Corrado 178HP
- F = 6cyl 1.9L (G) Passat 172HP
- S = 6cyl 2.8L (G) GTI VR6 / Jetta 172HP

W = Car
2 = MPV

W = Europe
3 = Mexico

Volkswagen V.I.N. decoder

'98 & Prior Restraints:

- 0 Active - Dr/Pass.
- 2 Passive
W/manual lap.
- 4 ELRA
W/manual lap.
- 5 AirBag - Dr.
Active - Dr/Pass.
- 6 AirBag - Dr/Pass.
Side AirBag Front Dr/Pass.
Active - Dr/Pass.
- 8 AirBag - Dr/Pass.
Active - Dr/Pass.

NOTES:

All '98 Passat and New Beetle Vehicles are equipped with depowered AirBags.
 Dr = Driver Side
 Pass = Passenger Side

Country of origin	Manufacturer	Vehicle Type	Series	Engine	Restraint System	Model (position 7 & 8)	Check Digit	Model Year	Assembly Plant	Sequential serial number (position 12 - 17)						
1	2	3	4	5	6	7	8	9	10	11	12	13	14	15	16	17



This is the sequential production number of the specific vehicle.

'99 Restraints:

- Golf, GTI, Jetta, Cabrio, New Beetle & New Jetta:**
 - 2 AirBag Dr/Pass (Depowered)
Side AirBag - Front Dr/Pass
 - 6 AirBag Dr/Pass (Standard)
Side AirBag - Front Dr/Pass
 - 8 AirBag - Dr/Pass. Active - Dr/Pass
- Passat, EuroVan, New Golf, New GTI:**
 - 2 or 8 AirBag Dr/Pass. Active - Dr/Pass (Depowered)
 - 3 or 6 AirBag - Dr/Pass (Depowered)
Side AirBag - Front Dr/Pass
 - 4 AirBag Dr/Pass (Depowered)
Side AirBag - Front & Rear Dr/Pass

Check Digit:

0-9 or "X"

This is a calculated digit per NHTSA code to determine the validity of a complete Vehicle Identification Number.

Must follow steps in order!

- 1- Model Year (position #10)
Locate & use appropriate card.
- 2- Model Code (positions #7 & #8)
- 3- Vehicle Series (position #4)
- 4- Engine Code (position #5)

Model Year

- A = 1980
- B = 1981
- C = 1982
- D = 1983
- E = 1984
- F = 1985
- G = 1986
- H = 1987
- J = 1988
- K = 1989
- L = 1990
- M = 1991
- N = 1992
- P = 1993
- R = 1994
- S = 1995
- T = 1996
- V = 1997
- W = 1998
- X = 1999

1995 Volkswagen V.I.N. decoder

SERIES:

- B = Cabrio**
 Golf 2dr III Sport
C = Passat 4dr GLS
D = Passat GLS Wagon
E = Passat 4dr GLX
 EuroVan 3dr Panel
 Passat GLX Wagon
H = GTI 2dr VR6
 Eurovan 3dr GL
J = Golf III 4dr City
 EuroVan 4dr GL
K = EuroVan 3dr GLS
 Golf III 4dr
L = EuroVan GLS 4dr
 Golf III 4dr Celebrity Edition
P = Jetta 4dr III
R = Jetta III 4dr GL
S = Jetta III 4dr GLS
T = Jetta III 4dr GLX
V = Jetta III 4dr City
W = Jetta III 4dr Celebrity Edition

Canada Only:

- A = Cabrio**
 Golf 2dr CL
 Passat 4dr GLS
B = Golf 2dr GL
 Passat GLS Wagon
C = Passat 4dr GLX
D = Golf 2dr GTI
 Passat GLX Wagon
E = Golf 4dr CL
 Corrado
F = Golf 4dr GL
P = Eurovan 3dr CV

NOTE:
No "III" on
the Canadian
Jetta models

Country of origin	Manufacturer	Vehicle Type	Series	Engine	Restraint System	Model (position 7 & 8)	Check Digit	Model Year	Assembly Plant	Sequential serial number (position 12 - 17)						
1	2	3	4	5	6	7	8	9	10	11	12	13	14	15	16	17
3	V	W	R	A	8	1 H	1	S	M	0	1	1	2	3	4	
Country Code	Volkswagen	Type			See Chart		0-9 or X	1995			E = Emden H = Hannover M = Mexico K = Osnabrueck W = Wolfsburg					
		W = Car 1 = Truck 2 = MPV				A = 4cyl 2.0L (G) Golf / Jetta / GTI (Except City) 115HP B = 4cyl 2.0L (G) Golf / Jetta / GTI / Cabrio 115HP C = 4cyl 2.0L (G) Golf / Jetta / Cabrio / Passat 115HP D = 6cyl 2.8L (G) Golf / Jetta / GTI (Except City) 172HP E = 6cyl 2.8L (G) Golf / Jetta / Passat 172HP E = 5cyl 2.5L (G) EuroVan 109HP F = 4cyl 1.9L (Diesel) Golf / Jetta / GTI 90HP 6cyl 2.8L (G) Corrado 172HP (Canada) G = 4cyl 1.8L (G) Golf / Jetta / GTI 90KW (Canada) G = 5cyl 2.4L (Diesel) EuroVan 77HP (Canada) H = 4cyl 1.9L (Diesel) Golf / Jetta / GTI 90HP					MODEL: 1E = Cabrio 1H = Golf / Jetta / GTI 3A = Passat 50 = Corrado* 70 = Eurovan *Canada Only					

S 1995



Volkswagen V.I.N. decoder

- ### '98 & Prior Restraints:
- 0 Active - Dr/Pass.
 - 2 Passive
 - W/manual lap.
 - 4 ELRA
 - W/manual lap.
 - 5 AirBag - Dr.
 - Active - Dr/Pass.
 - 6 AirBag - Dr/Pass.
 - Side AirBag Front
 - Dr/Pass.
 - Active - Dr/Pass.
 - 8 AirBag - Dr/Pass.
 - Active - Dr/Pass.
- NOTES:**
All '98 Passat an New Beetle Vehicles are equipped with depowered AirBags.
- Dr = Driver Side
Pass = Passenger Side

Country of origin	Manufacturer	Vehicle Type	Series	Engine	Restraint System	Model (position 7 & 8)	Check Digit	Model Year	Assembly Plant	Sequential serial number (position 12 - 17)						
1	2	3	4	5	6	7	8	9	10	11	12	13	14	15	16	17

- ### '99 Restraints:
- Golf, GTI, Jetta, Cabrio, New Beetle & New Jetta:**
- 2 AirBag Dr/Pass (Depowered)
 - Side AirBag - Front Dr/Pass
 - 6 AirBag Dr/Pass (Standard)
 - Side AirBag - Front Dr/Pass
 - 8 AirBag - Dr/Pass. Active - Dr/Pass
- Passat, EuroVan, New Golf, New GTI:**
- 2 or 8 AirBag Dr/Pass. Active - Dr/Pass (Depowered)
 - 3 or 6 AirBag - Dr/Pass (Depowered)
 - Side AirBag - Front Dr/Pass
 - 4 AirBag Dr/Pass (Depowered)
 - Side AirBag - Front & Rear Dr/Pass

Check Digit: 0-9 or "X"

This is a calculated digit per NHTSA code to determine the validity of a complete Vehicle Identification Number.

Must follow steps in order!

- 1- Model Year (position #10)
Locate & use appropriate card.
- 2- Model Code (positions #7 & #8)
- 3- Vehicle Series (position #4)
- 4- Engine Code (position #5)

- ### Model Year
- A = 1980
 - B = 1981
 - C = 1982
 - D = 1983
 - E = 1984
 - F = 1985
 - G = 1986
 - H = 1987
 - J = 1988
 - K = 1989
 - L = 1990
 - M = 1991
 - N = 1992
 - P = 1993
 - R = 1994
 - S = 1995
 - T = 1996
 - V = 1997
 - W = 1998
 - X = 1999

1996 Volkswagen V.I.N. decoder

SERIES:

- B = Cabrio
- D = GTI 2dr
- E = Passat 4dr GLX
- F = Golf 4dr GL / TDI
Passat GLX Wagon
- G = Passat 4dr GLS / TDI
- H = Passat GLS / TDI Wagon
GTI 2dr VR6
- P = Jetta 4dr Wolfsburg Ed.
- R = Jetta 4dr GL / TDI
- S = Jetta 4dr GLS
- T = Jetta 4dr GLX
- W = Jetta 4dr TREK

Canada Only:

- A = Cabrio
- Golf 2dr CL
- Passat 4dr GLS/TDI
- B = Golf 2dr GL / TDI
- Passat GLS / TDI
- C = Passat 4dr GLX
- D = Golf 2dr GTI
- Passat GLX Wagon
- E = Eurovan 3dr
Camper / Panel
- Golf 4dr CL
- K = Eurovan 3dr GLS
- L = Eurovan 4dr GLS
- P = Eurovan 3dr CV

Country of origin	Manufacturer	Vehicle Type	Series	Engine	Restraint System	Model (position 7 & 8)	Check Digit	Model Year	Assembly Plant	Sequential serial number (position 12 - 17)						
1	2	3	4	5	6	7	8	9	10	11	12	13	14	15	16	17

T 1996

Country Code: 3
 Volkswagen: V
 Type: W
 W = Car
 1 = Truck
 2 = MPV
 W = Europe
 3 = Mexico

See Chart: 8
 Model: 1 H
 Check Digit: 9
 0-9 or X
 Model Year: T
 1996
 Assembly Plant: M

Sequential serial number (position 12-17): 1 2 3 4 5 6
 B= Brussels E= Emden
 H= Hannover M= Mexico
 K= Osnabrueck W= Wolfsburg

- #### MODEL:
- A, L = 4cyl 2.0L (G) Golf / Jetta / GTI / Cabrio 115HP
 - B = 4cyl 2.0L (G) Golf / Jetta / GTI / Cabrio 115HP
 - C = 4cyl 2.0L (G) Passat 115HP
 - D = 6cyl 2.8L (G) Golf / Jetta / GTI 172HP
 - E = 6cyl 2.8L (G) Passat 172HP
 - 5cyl 2.5L (G) EuroVan 109HP (Canada Only)
 - F = 4cyl 1.9L (Diesel) Golf / Jetta / GTI 90HP
 - G = 4cyl 1.9L (Diesel) Golf / Jetta / GTI / Passat 90HP
 - 5cyl 2.4L (Diesel) EuroVan 77HP (Canada Only)
 - J = 4cyl 1.9L (Diesel) Golf / Jetta / GTI 74HP (Canada)
 - K = 4cyl 1.8L (Diesel) Golf / Jetta / GTI 90HP (Canada)

- 1E = Cabrio
 - 1H = Golf / Jetta / GTI
 - 3A = Passat
 - 70 = Eurovan*
- *Canada

Volkswagen V.I.N. decoder

'98 & Prior Restraints:

- 0 Active - Dr/Pass.
- 2 Passive
W/manual lap.
- 4 ELRA
W/manual lap.
- 5 AirBag - Dr.
Active - Dr/Pass.
- 6 AirBag - Dr/Pass.
Side AirBag Front
Dr/Pass.
Active - Dr/Pass.
- 8 AirBag - Dr/Pass.
Active - Dr/Pass.

NOTES:

All '98 Passat and New Beetle Vehicles are equipped with depowered AirBags.

Dr = Driver Side
 Pass = Passenger Side

Country of origin	Manufacturer	Vehicle Type	Series	Engine	Restraint System	Model (position 7 & 8)	Check Digit	Model Year	Assembly Plant	Sequential serial number (position 12 - 17)						
1	2	3	4	5	6	7	8	9	10	11	12	13	14	15	16	17



Model Year

- A = 1980
- B = 1981
- C = 1982
- D = 1983
- E = 1984
- F = 1985
- G = 1986
- H = 1987
- J = 1988
- K = 1989
- L = 1990
- M = 1991
- N = 1992
- P = 1993
- R = 1994
- S = 1995
- T = 1996
- V = 1997
- W = 1998
- X = 1999

'99 Restraints:

Golf, GTI, Jetta, Cabrio, New Beetle & New Jetta:

- 2 AirBag Dr/Pass (Depowered)
Side AirBag - Front Dr/Pass
- 6 AirBag Dr/Pass (Standard)
Side AirBag - Front Dr/Pass
- 8 AirBag - Dr/Pass. Active - Dr/Pass

Passat, EuroVan, New Golf, New GTI:

- 2 or 8 AirBag Dr/Pass. Active - Dr/Pass (Depowered)
- 3 or 6 AirBag - Dr/Pass (Depowered)
Side AirBag - Front Dr/Pass
- 4 AirBag Dr/Pass (Depowered)
Side AirBag - Front & Rear Dr/Pass

Check Digit:

0-9 or "X"

This is a calculated digit per NHTSA code to determine the validity of a complete Vehicle Identification Number.

Must follow steps in order!

- 1- Model Year (position #10)
Locate & use appropriate card.
- 2- Model Code (positions #7 & #8)
- 3- Vehicle Series (position #4)
- 4- Engine Code (position #5)

1997 Volkswagen V.I.N. decoder

SERIES:

- A = Cabrio
- B = Cabrio Highline
- D = GTI 2dr
- E = Passat 4dr GLX
Eurovan 3dr Camper
- F = Golf 4dr GL / TDI
Passat GLX Wagon
- G = GTI 2dr VR6 Dr. Ed.
Passat 4dr GLS / TDI
- H = GTI 2dr VR6
Passat GLS / TDI Wagon
- K = Golf 4dr K2 Edition
Eurovan 3dr GLS
- L = Golf 4dr TREK
- M = Golf 4dr Jazz
Eurovan 3dr MV
- R = Jetta 4dr GL/TDI
- S = Jetta 4dr GLS
- T = Jetta 4dr GLX
- V = Jetta 4dr GT
- W = Jetta 4dr TREK
- X = Jetta 4dr Jazz

Canada Only:

- A = Golf 2dr CL
Passat GLS/TDI
- B = Golf 2dr GL / TDI
Passat GLS / TDI Wagon
- C = Passat 4dr GLX
- D = Passat GLX Wagon
- E = Golf 4dr CL

Country of origin	Manufacturer	Vehicle Type	Series	Engine	Restraint System	Model (position 7 & 8)	Check Digit	Model Year	Assembly Plant	Sequential serial number (position 12 - 17)						
1	2	3	4	5	6	7	8	9	10	11	12	13	14	15	16	17
3	V	W	B	A	8	1 E	3	V	M	8	0	6	7	8	9	
Country Code	Volkswagen	W Type			See Chart		0-9 or X	1997			B = Brussels E = Emden H = Hannover M = Mexico K = Osnabrueck W = Wolfsburg					
		W = Car 1 = Truck 2 = MPV				A, L = 4cyl 2.0L (G) Golf / Jetta / GTI / Cabrio 115HP B = 4cyl 2.0L (G) Golf / Jetta / GTI / 115HP C = 4cyl 2.0L (G) Passat 115HP D = 6cyl 2.8L (G) Golf / Jetta / GTI 172HP E = 6cyl 2.8L (G) Passat 172HP F = 4cyl 1.9L (Diesel) Golf / Jetta / GTI 90HP G = 4cyl 1.9L (Diesel) Passat 90HP 5cyl 2.4L (Diesel) EuroVan 77HP (Canada Only) H = 6cyl 2.8L (G) EuroVan 140HP J = 4cyl 1.9L (Diesel) Golf / Jetta / GTI 74HP (Canada) K = 4cyl 1.8L (G) Golf / Jetta / GTI 90HP (Canada Only)					MODEL: 1E = Cabrio 1H = Golf / Jetta / GTI 3A = Passat 7D = Eurovan					

V 1997

Sequential serial number (position 12 - 17)

'98 & Prior Restraints:

- 0 Active - Dr/Pass.
- 2 Passive
W/manual lap.
- 4 ELRA
W/manual lap.
- 5 AirBag - Dr.
Active - Dr/Pass.
- 6 AirBag - Dr/Pass.
Side AirBag Front Dr/Pass.
Active - Dr/Pass.
- 8 AirBag - Dr/Pass.
Active - Dr/Pass.

NOTES:

All '98 Passat an New Beetle Vehicles are equipped with depowered AirBags.
Dr = Driver Side
Pass = Passenger Side

Volkswagen V.I.N. decoder

Country of origin	Manufacturer	Vehicle Type	Series	Engine	Restraint System	Model (position 7 & 8)	Check Digit	Model Year	Assembly Plant	Sequential serial number (position 12 - 17)						
1	2	3	4	5	6	7	8	9	10	11	12	13	14	15	16	17
											This is the sequential production number of the specific vehicle.					
											Check Digit: 0-9 or "X" This is a calculated digit per NHTSA code to determine the validity of a complete Vehicle Identification Number.					
											Must follow steps in order! 1- Model Year (position #10) Locate & use appropriate card. 2- Model Code (positions #7 & #8) 3- Vehicle Series (position #4) 4- Engine Code (position #5)					
											'99 Restraints: Golf, GTI, Jetta, Cabrio, New Beetle & New Jetta: 2 AirBag Dr/Pass (Depowered) Side AirBag - Front Dr/Pass 6 AirBag Dr/Pass (Standard) Side AirBag - Front Dr/Pass 8 AirBag - Dr/Pass. Active - Dr/Pass Passat, EuroVan, New Golf, New GTI: 2 or 8 AirBag Dr/Pass. Active - Dr/Pass (Depowered) 3 or 6 AirBag - Dr/Pass (Depowered) Side AirBag - Front Dr/Pass 4 AirBag Dr/Pass (Depowered) Side AirBag - Front & Rear Dr/Pass					



Model Year

- A = 1980
- B = 1981
- C = 1982
- D = 1983
- E = 1984
- F = 1985
- G = 1986
- H = 1987
- J = 1988
- K = 1989
- L = 1990
- M = 1991
- N = 1992
- P = 1993
- R = 1994
- S = 1995
- T = 1996
- V = 1997
- W = 1998
- X = 1999

1998 Volkswagen V.I.N. decoder

- SERIES:**
- A = Cabrio GL
 - B = Cabrio GLS
New Beetle
 - D = GTI 2dr
 - F = Golf 4dr GL/TDI
 - H = GTI 2dr VR6
 - J = Golf 4dr Wolfsburg Ed.
 - K = Golf 4dr K2 Edition
 - M = Passat 4dr GLS (USA)
 - N = Passat GLS/TDI Wagon (USA)
 - P = Jetta 4dr Wolfsburg Ed.
Passat 4dr GLX (USA)
 - R = Jetta 4dr GL / TDI
 - S = Jetta 4dr GLS
 - T = Jetta 4dr GLX
Passat GLS Syncro Wagon (USA)
 - V = Jetta 4dr GT
 - Y = Jetta 4dr K2 Edition
- Canada Only:**
- A = Passat 4dr GLS/TDI
 - B = Passat 4dr GLS/TDI
Wagon
 - C = Golf 4dr Base
 - F = Passat GLS Syncro
Wagon

Country of origin	Manufacturer	Vehicle Type	Series	Engine	Restraint System	Model (position 7 & 8)	Check Digit	Model Year	Assembly Plant	Sequential serial number (position 12 - 17)						
1	2	3	4	5	6	7	8	9	10	11	12	13	14	15	16	17



Country Code: 3
 Volkswagen: V
 Type: W
 See Chart: 6
 0-9 or X: 2
 1998: 10
 B = Brussels, E = Emden, H = Hannover, M = Mexico, W = Wolfsburg

- MODEL:**
- 1C = New Beetle
 - 1E = Cabrio
 - 1H = Golf /Jetta & GTI
 - 3B = Passat
- W = Europe**
3 = Mexico
- W = Car**
2 = MPV
- Model Legend:**
- A = 4cyl 2.0L (G) Golf / Jetta / GTI / Cabrio 115HP
 - A = 4cyl 1.8L (G) Passat 150HP
 - B = 4cyl 2.0L (G) Golf / Jetta / GTI / Cabrio / New Beetle 115HP
 - D = 6cyl 2.8L (G) Golf / Jetta / GTI 172HP
 - D = 6cyl 2.8L (G) Passat 190HP
 - F = 4cyl 1.9L (Diesel) Golf / Jetta / New Beetle 90HP
 - G = 4cyl 1.9L (Diesel) Passat 90HP

Volkswagen V.I.N. decoder

- '98 & Prior Restraints:**
- 0 Active - Dr/Pass.
 - 2 Passive
W/manual lap.
 - 4 ELRA
W/manual lap.
 - 5 AirBag - Dr.
Active - Dr/Pass.
 - 6 AirBag - Dr/Pass.
Side AirBag Front
Dr/Pass.
Active - Dr/Pass.
 - 8 AirBag - Dr/Pass.
Active - Dr/Pass.
- NOTES:**
- All '98 Passat and New Beetle Vehicles are equipped with depowered AirBags.
- Dr = Driver Side
Pass = Passenger Side

Country of origin	Manufacturer	Vehicle Type	Series	Engine	Restraint System	Model (position 7 & 8)	Check Digit	Model Year	Assembly Plant	Sequential serial number (position 12 - 17)						
1	2	3	4	5	6	7	8	9	10	11	12	13	14	15	16	17



- Model Year**
- A = 1980
 - B = 1981
 - C = 1982
 - D = 1983
 - E = 1984
 - F = 1985
 - G = 1986
 - H = 1987
 - J = 1988
 - K = 1989
 - L = 1990
 - M = 1991
 - N = 1992
 - P = 1993
 - R = 1994
 - S = 1995
 - T = 1996
 - V = 1997
 - W = 1998
 - X = 1999

- '99 Restraints:**
- Golf, GTI, Jetta, Cabrio, New Beetle & New Jetta:**
- 2 AirBag Dr/Pass (Depowered)
Side AirBag - Front Dr/Pass
 - 6 AirBag Dr/Pass (Standard)
Side AirBag - Front Dr/Pass
 - 8 AirBag - Dr/Pass. Active - Dr/Pass
- Passat, EuroVan, New Golf, New GTI:**
- 2 or 8 AirBag Dr/Pass. Active - Dr/Pass (Depowered)
 - 3 or 6 AirBag - Dr/Pass (Depowered)
Side AirBag - Front Dr/Pass
 - 4 AirBag Dr/Pass (Depowered)
Side AirBag - Front & Rear Dr/Pass

Check Digit:
0-9 or "X"

This is a calculated digit per NHTSA code to determine the validity of a complete Vehicle Identification Number.

- Must follow steps in order!**
- 1- Model Year (position #10)
Locate & use appropriate card.
 - 2- Model Code (positions #7 & #8)
 - 3- Vehicle Series (position #4)
 - 4- Engine Code (position #5)

1999 Volkswagen V.I.N. decoder

SERIES:

- A = Cabrio
- B = Cabrio GLS
New Beetle GL
New Golf 4dr GL
- C = New Cabrio GL
New Beetle GLS
- D = New Cabrio GLS
New Beetle GLX
- E = EuroVan 3dr Camper
- F = Golf 4dr GL
- G = New Golf 4dr GLS
- H = GTI 2dr VR6
- J = Golf 4dr Wolfsburg Ed.
- K = EuroVan 3dr GLS
- M = New Jetta 4dr GLS (USA)
EuroVan 3dr MV
- N = Passat GLS Wagon (USA)
EuroVan 3dr Weekender
- P = Jetta 4dr Wolfsburg Ed.
- R = Jetta 4dr GL / TDI & New Jetta 4dr GL
Passat GLS Syncro Wagon (USA)
- S = New Jetta 4dr GLS
- T = Jetta 4dr GLX
Passat 4dr GLS Syncro (USA)
- U = Passat 4dr GLX Syncro (USA)
- W = Passat GLX Syncro Wagon (USA)

Canada Only:

- A = Passat 4dr GLS
- B = Passat GLS Wagon
- C = Golf 4dr Base
- E = Passat GLS Syncro Wagon
- F = Passat 4dr GLS Syncro
- G = Passat 4dr GLX Syncro
- H = Passat GLX Syncro Wagon

Country of origin	Manufacturer	Vehicle Type	Series	Engine	Restraint System	Model (position 7 & 8)	Check Digit	Model Year	Assembly Plant	Sequential serial number (position 12 - 17)						
1	2	3	4	5	6	7	8	9	10	11	12	13	14	15	16	17

X 1999

Country Code: 3
 Manufacturer: V (Volkswagen)
 Vehicle Type: W (Type)
 Series: B
 Engine: B
 Restraint System: 8 (See Chart)
 Model: 1 E
 Check Digit: 5 (0-9 or X)
 Model Year: X (1999)
 Assembly Plant: M 8
 Sequential serial number: 0 3 4 5 6

E = Emden H = Hannover
 M = Mexico W = Wolfsburg

W = Car
 2 = MPV

W = Europe
 3 = Mexico

- MODEL:**
- A = 4cyl 2.0L (G)Golf / Jetta / GTI / Beetle 115HP
 - A = 4cyl 1.8L (G)Passat 150HP
 - B = 4cyl 2.0L (G)Golf / Jetta / GTI / Cabrio 115HP
 - C = 4cyl 2.0L (G)Golf / Jetta / GTI / Beetle 115HP
 - D = 6cyl 2.8L (G)Golf / Jetta / GTI 172HP
 - D = 4cyl 1.8L (G)TLEV New Beetle & Jetta 148HP
 - D = 6cyl 2.8L (G)Passat 190HP
 - E = 6cyl 2.8L (G)New Beetle, Jetta, Golf & GTI 174HP
 - F = 4cyl 1.9L (Diesel) Golf / Jetta / GTI / Beetle 90HP
 - H = 6cyl 2.8L (G) EuroVan 140HP

- MODEL:**
- 1C = New Beetle
 - 1E = Cabrio
 - 1H = Golf /Jetta & GTI
 - 3B = Passat
 - 70 = EuroVan
 - 1J = New Golf/GTI
 - 9M = New Jetta

Volkswagen V.I.N. decoder

- '98 & Prior Restraints:**
- 0 Active - Dr/Pass.
 - 2 Passive
W/manual lap.
 - 4 ELRA
W/manual lap.
 - 5 AirBag - Dr.
Active - Dr/Pass.
 - 6 AirBag - Dr/Pass.
Side AirBag Front Dr/Pass.
Active - Dr/Pass.
 - 8 AirBag - Dr/Pass.
Active - Dr/Pass.
- NOTES:**
 All '98 Passat an New Beetle Vehicles are equipped with depowered AirBags.
- Dr = Driver Side
 Pass = Passenger Side

Country of origin	Manufacturer	Vehicle Type	Series	Engine	Restraint System	Model (position 7 & 8)	Check Digit	Model Year	Assembly Plant	Sequential serial number (position 12 - 17)						
1	2	3	4	5	6	7	8	9	10	11	12	13	14	15	16	17



- Model Year**
- A = 1980
 - B = 1981
 - C = 1982
 - D = 1983
 - E = 1984
 - F = 1985
 - G = 1986
 - H = 1987
 - J = 1988
 - K = 1989
 - L = 1990
 - M = 1991
 - N = 1992
 - P = 1993
 - R = 1994
 - S = 1995
 - T = 1996
 - V = 1997
 - W = 1998
 - X = 1999

- '99 Restraints:**
- Golf, GTI, Jetta, Cabrio, New Beetle & New Jetta:**
- 2 AirBag Dr/Pass (Depowered)
Side AirBag - Front Dr/Pass
 - 6 AirBag Dr/Pass (Standard)
Side AirBag - Front Dr/Pass
 - 8 AirBag - Dr/Pass. Active - Dr/Pass
- Passat, EuroVan, New Golf, New GTI:**
- 2 or 8 AirBag Dr/Pass. Active - Dr/Pass (Depowered)
 - 3 or 6 AirBag - Dr/Pass (Depowered)
Side AirBag - Front Dr/Pass
 - 4 AirBag Dr/Pass (Depowered)
Side AirBag - Front & Rear Dr/Pass

Check Digit:
 0-9 or "X"

This is a calculated digit per NHTSA code to determine the validity of a complete Vehicle Identification Number.

- Must follow steps in order!**
- 1- Model Year (position #10)
Locate & use appropriate card.
 - 2- Model Code (positions #7 & #8)
 - 3- Vehicle Series (position #4)
 - 4- Engine Code (position #5)

SERIES:

USA

- B = Golf 2dr GL
- New Beetle GL
- C = Cabrio GL
- New Beetle GLS
- D = Cabrio GLS
- GTI 2dr
- New Beetle GLX
- E = EuroVan 3dr Camper
- G = Golf 4dr GLS
- K = EuroVan 3dr GLS
- M = Passat 4dr GLS
- EuroVan 3dr MV
- N = Passat GLS Wagon
- EuroVan 3dr Weekender
- P = Passat 4dr GLX
- R = Jetta 4dr GL
- S = Jetta 4dr GLS
- V = Passat GLX Wagon

Canada

- A = Passat 4dr GLS
- B = Passat Wagon GLS/X
- Golf 2dr GL
- New Beetle GL
- C = Cabrio GL
- New Beetle GLS
- Passat 4dr GLX
- D = Cabrio GLS
- GTI 2dr
- New Beetle GLX
- E = EuroVan 3dr Camper
- G = Golf 4dr GLS
- K = EuroVan 3dr GLS
- M = EuroVan 3dr MV
- N = EuroVan 3dr MV
- Weekender
- R = Jetta 4dr GL
- S = Jetta 4dr GLS
- T = Jetta 4dr GLX

2000 Volkswagen V.I.N. decoder

Country of origin	Manufacturer	Vehicle Type	Series	Engine	Restraint System	Model (position 7 & 8)	Check Digit	Model Year	Assembly Plant	Sequential serial number (position 12 - 17)						
1	2	3	4	5	6	7	8	9	10	11	12	13	14	15	16	17
3	V	W	D	D	4	1 C	5	Y	M	8	0	3	4	5	6	
Country Code	Volkswagen	Type			See Chart			2000			E = Emden H = Hannover M = Mexico W = Wolfsburg					
		W = Car 2 = MPV				A = 4cyl 2.0L (G) Golf / Jetta / GTI / Beetle 115HP A = 4cyl 1.8L (G) Passat 150HP C = 4cyl 2.0L (G) Golf / Jetta / Cabrio / Beetle 115HP D = 6cyl 2.8L (G) Passat 190HP D = 4cyl 1.8L (G) New Beetle 148HP E = 6cyl 2.8L (G) Jetta, Golf & GTI 174HP F = 4cyl 1.9L (Diesel) Golf / Jetta / GTI / Beetle 90HP H = 6cyl 2.8L (G) EuroVan 140HP					MODEL: 1C = New Beetle 1E = Cabrio 1J = Golf /GTI 3B = Passat 70 = EuroVan 9M = Jetta					

Volkswagen V.I.N. decoder

'98 & Prior Restraints:

- 0 Active - Dr/Pass.
- 2 Passive
- W/manual lap.
- 4 ELRA
- W/manual lap.
- 5 AirBag - Dr.
- Active - Dr/Pass.
- 6 AirBag - Dr/Pass.
- Side AirBag Front
- Dr/Pass.
- Active - Dr/Pass.
- 8 AirBag - Dr/Pass.
- Active - Dr/Pass.

NOTES:

All '98 Passat and New Beetle Vehicles are equipped with depowered AirBags.

Dr = Driver Side
Pass = Passenger Side

Country of origin	Manufacturer	Vehicle Type	Series	Engine	Restraint System	Model (position 7 & 8)	Check Digit	Model Year	Assembly Plant	Sequential serial number (position 12 - 17)						
1	2	3	4	5	6	7	8	9	10	11	12	13	14	15	16	17
											This is the sequential production number of the specific vehicle.					
											Check Digit: 0-9 or "X" This is a calculated digit per NHTSA code to determine the validity of a complete Vehicle Identification Number.					
											Must follow steps in order! 1- Model Year (position #10) Locate & use appropriate card. 2- Model Code (positions #7 & #8) 3- Vehicle Series (position #4) 4- Engine Code (position #5)					

Model Year

- A = 1980
- B = 1981
- C = 1982
- D = 1983
- E = 1984
- F = 1985
- G = 1986
- H = 1987
- J = 1988
- K = 1989
- L = 1990
- M = 1991
- N = 1992
- P = 1993
- R = 1994
- S = 1995
- T = 1996
- V = 1997
- W = 1998
- X = 1999
- Y = 2000



SERIES:

- A** = Passat 4dr GLS
 - B** = Cabrio GL
Golf 2dr GL
New Beetle GL
Passat 4dr GLX
 - C** = Cabrio GLS
New Beetle GLS
 - D** = Cabrio GLX
GTI 2dr GLS
New Beetle GLX
Passat 4dr GLS 4Motion
 - E** = Passat 4dr GLX 4Motion
EuroVan 3dr Camper
New Beetle Sport
 - G** = Golf 4dr GLS
 - H** = Passat GLS Wagon
 - J** = Passat GLX Wagon
 - K** = EuroVan 3dr GLS
Passat GLS Wagon 4Motion
 - L** = Passat GLX Wagon 4Motion
 - M** = EuroVan 3dr MV
 - N** = EuroVan 3dr MV Weekender
 - P** = GTI 2dr GLX
Jetta Wolfsburg Edition
New Passat 4dr GLS
 - R** = Jetta 4dr GL
Jetta Wagon GL ***
 - S** = Jetta 4dr GLS
Jetta Wagon GLS ***
 - T** = Jetta 4dr GLX
Jetta Wagon GLX ***
 - V** = New Passat GLS,
Wagon
 - W** = New Passat GLX,
Wagon
 - X** = New Passat GLS,
4Motion Wagon
 - Y** = New Passat GLX,
4Motion Wagon
- *** US only for 2001

2001 Volkswagen V.I.N. decoder

Country of origin	Manufacturer	Vehicle type	Series	Engine	Restraint system	Model (position 7&8)		Check digit	Model year	Assembly plant	Sequential serial number (position 12 - 17)					
1	2	3	4	5	6	7	8	9	10	11	12	13	14	15	16	17
3	V	W	D	D	4	1	C	5	1	M	8	0	3	4	5	6
Country Code V = Volkswagen B = Brazil	Manufacturer	Type W = Car 2 = MPV 3 = Incomplete	Series	Engine	See chart	Y 0-9 or X		0-9 or X	2001	M	4 = Curitiba E = Emden H = Hannover M = Mexico P = Mosel W = Wolfsburg					
<p>MODEL:</p> <p>1C = New Beetle 1J = Golf / GTI 1V = Cabrio 3B = Passat new Passat 70 = EuroVan 9M = Jetta</p>																

Revised May 2001

2001 Volkswagen V.I.N. Decoder

Country of origin	Manufacturer	Vehicle type	Series	Engine	Restraint system	Model (position 7&8)		Check digit	Model year	Assembly plant	Sequential serial number (position 12 - 17)					
1	2	3	4	5	6	7	8	9	10	11	12	13	14	15	16	17



Model Year:

- B = 1981
- C = 1982
- D = 1983
- E = 1984
- F = 1985
- G = 1986
- H = 1987
- J = 1988
- K = 1989
- L = 1990
- M = 1991
- N = 1992
- P = 1993
- R = 1994
- S = 1995
- T = 1996
- V = 1997
- W = 1998
- X = 1999
- Y = 2000
- 1 = 2001

2000 / 2001 Restraints:

- All models (except EuroVan):**
- 2 AirBag Dr/Pass
Side AirBag - Front Dr/Pass
 - 6 AirBag Dr/Pass (Standard)
Side AirBag - Front Dr/Pass
Side Curtain AirBag
- EuroVan:**
- 4 AirBag Dr/Pass
Side AirBag - Front & Rear Dr/Pass

CheckDigit:

0-9 or "X"
This is a calculated digit per NHTSA code to determine the validity of a complete Vehicle Identification Number.

Must follow steps in order!

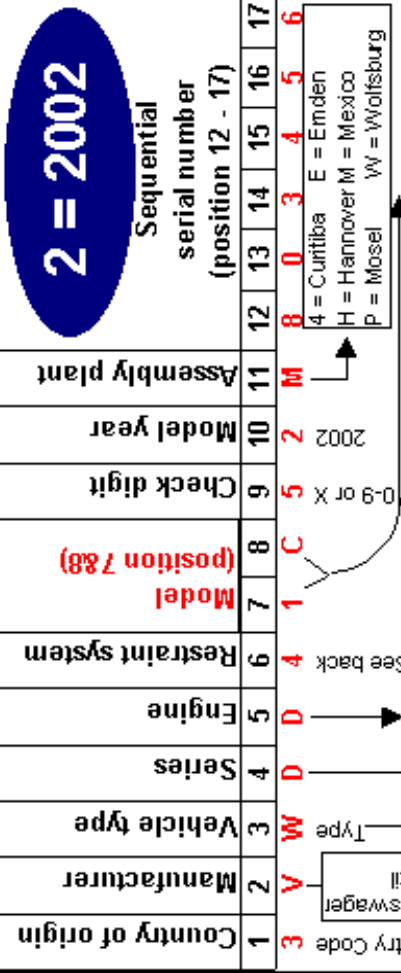
- 1- Model Year (position #10)
Locate & use appropriate card.
- 2 - Model Code (positions #7 & 8)
- 3 - Vehicle Series (position #4)
- 4 - Engine Code (position #5)

This is the sequential production number of the specific vehicle.

2002 Volkswagen V.I.N. Decoder

SERIES:

- B** = Cabrio GL
- T** = Jetta 4dr GLX
- C** = Cabrio GLS
- U** = P assat W8 4Motion
- D** = Cabrio GLX
- V** = P assat GLS Wagon
- E** = EuroVan 3dr Camper
- F** = Golf 4dr GL
- G** = Golf 4dr GLS
- K** = EuroVan 3dr GLS
- M** = EuroVan 3dr MV
- N** = EuroVan 3dr MV Weekender
- P** = P assat 4dr GLS
- R** = Jetta 4dr GL
- S** = Jetta 4dr GLS
- W** = P assat W8 4Motion
- X** = P assat Wagon GLS
- Y** = P assat Wagon GLS 4Motion
- Z** = P assat W8 4Motion Wagon
- Jetta Wagon GL (US only)**
- P assat 4dr GLX**
- Jetta 4dr GLS**
- Jetta Wagon GLS (US only)**
- P assat 4dr GLS 4Motion**



2002 Volkswagen V.I.N. Decoder



Model Year:

- D = 1983
- E = 1984
- F = 1985
- G = 1986
- H = 1987
- J = 1988
- K = 1989
- L = 1990
- M = 1991
- N = 1992
- P = 1993
- R = 1994
- S = 1995
- T = 1996
- V = 1997
- W = 1998
- X = 1999
- Y = 2000
- 1 = 2001
- 2 = 2002
- 3 = 2003

2002 Restraints:

- 2 - AirBag - Active - Dr/P ass
- Side Impact AirBag - Front - Dr/P ass
- 4 - AirBag - Active - Dr/P ass
- 6 - AirBag - Active - Dr/P ass
- Side Curtain AirBags
- Side Impact AirBag - Front - Dr/P ass

CheckDigit: 0-9 or "X"

This is a calculated digit per NHTSA code to determine the validity of a complete Vehicle Identification Number.

Must follow steps in order:

- 1- Model Year (position #10) Locate & use appropriate card.
- 2- Model Code (positions #7 & 8)
- 3 - Vehicle Series (position #4)
- 4 - Engine Code (position #5)

2003 Volkswagen V.I.N. Decoder

SERIES:

B = Golf 2dr GL***
 New Beetle GL***
 New Beetle Conv. GL

C = New Beetle GLS
 New Beetle Conv. GLS
 D = New Beetle Conv. GLX

D = New Beetle Conv. GLS
 GTI 2dr GLS
 New Beetle GLX

E = EuroVan 3dr Camper
 Golf 4dr CL**

F = Golf 4dr GL
 New Beetle Turbo S***

G = Golf 4dr GLS

K = EuroVan 3dr GLS
 GTI 2dr Jubilee II

M = Passat GL***
 EuroVan 3dr MV

N = EuroVan 3dr MV Weekender
 Passat GL Wagon***

P = Passat 4dr GLS

R = Jetta 4dr GL***
 Jetta Wagon GL***

S = Jetta 4dr GLX
 Jetta Wagon GLS

T = Jetta Wagon GLS
 Passat 4dr GLX 4Motion

U = Passat W8 4Motion

V = Jetta 4dr GLI
 Passat GLS Wagon

W = Passat Wagon GLX
 Y = Passat Wagon GLX 4Motion
 Z = Passat W8 4Motion Wagon

** CAN Only
 *** US Only

1	2	3	4	5	6	7	8	9	10	11	12	13	14	15	16	17
Country of origin	Manufacturer	Vehicle type	Series	Engine	Restraint system	Model (position 7&8)	Check digit	Model year	Assembly plant	Sequential serial number (position 12 - 17)						
W	V	W	U	K	6	3	B	7	3	P	0	3	2	1	7	5

3 = 2003

WVW = Europe Pass. Car
 WV2 = Europe MPV
 3VW = Mexico Pass. Car
 9BW = Brazil Pass. Car

See back

4 = Curitiba E = Emden
 H = Hannover M = Mexico
 P = Mosel W = Wolfsburg

MODEL:

1C = New Beetle
 1J = Golf / GTI / Jetta Wagon
 1Y = New Beetle Convertible
 3B = Passat
 70 = EuroVan
 9M = Jetta

A = 4cyl 2.0L (Gas) Jetta 115HP
 B = 6cyl 2.8L (Gas) EuroVan 201HP
 D = 4cyl 1.8L (Gas) Beetle 150HP
 D = 4cyl 1.8L (Gas) Passat 170HP
 E = 4cyl 1.8L (Gas) Jetta / GTI / Beetle 180HP
 H = 6cyl 2.8L (Gas) Jetta / GTI 200HP
 H = 6cyl 2.8L (Gas) Passat 190HP
 K = 4cyl 2.0L (Gas) Golf / Jetta / Beetle 115HP
 K = V8 4.0L (Gas) Passat W8 270HP
 P = 4cyl 1.9L (Diesel) Golf / Jetta / GTI / Beetle 90HP

Oct. 2003

2003 Volkswagen V.I.N. Decoder

1	2	3	4	5	6	7	8	9	10	11	12	13	14	15	16	17
Country of origin	Manufacturer	Vehicle type	Series	Engine	Restraint system	Model (position 7&8)	Check digit	Model year	Assembly plant	Sequential serial number (position 12 - 17) This is the sequential production number of the specific vehicle.						



Model Year:

- D = 1983
- E = 1984
- F = 1985
- G = 1986
- H = 1987
- J = 1988
- K = 1989
- L = 1990
- M = 1991
- N = 1992
- P = 1993
- R = 1994
- S = 1995
- T = 1996
- V = 1997
- W = 1998
- X = 1999
- Y = 2000
- 1 = 2001
- 2 = 2002
- 3 = 2003

2002 - 2003 Restraints:

- 2 AirBag - Active - Dr/Pass
Side Impact AirBag - Front - Dr/Pass
- 4 AirBag - Active - Dr/Pass
- 6 AirBag - Active - Dr/Pass
Side Curtain AirBags
Side Impact AirBag - Front - Dr/Pass

CheckDigit:
0-9 or "X"

This is a calculated digit per NHTSA code to determine the validity of a complete Vehicle Identification Number.

Must follow steps in order!

- 1- Model Year (position #10)
Locate & use appropriate card.
- 2 - Model Code (positions #7 & 8)
- 3 - Vehicle Series (position #4)
- 4 - Engine Code (position #5)

2004 Volkswagen V.I.N. Decoder

1	2	3	4	5	6	7	8	9	10	11	12	13	14	15	16	17
Country of origin	Manufacturer	Vehicle type	Series	Engine	Restraint system	Model (position 7 & 8)	Check digit	Model year	Assembly plant	Sequential serial number (position 12 - 17)						
3	V W	W	V	H	6	9 M	4 X	4	M	0	0	8	8	9	8	

4 = 2004

4 = Curitiba D = Bratislava
 H = Hannover P = Mosel
 8 = Dresden E = Emden
 M = Mexico W = Wolfsburg

MODEL:
 1C = New Beetle
 1J = Golf / GTI / R32
 Jetta Wagon
 1Y = New Beetle
 Convertible
 3B = Passat
 3D = Phaeton
 7L = Touareg
 9M = Jetta

A = 4cyl 2.0L (Gas) Jetta 115HP
 C = 6cyl 3.2L (Gas) Touareg 220HP
 D = 4cyl 1.8L (Gas) Beetle 150HP / Passat 170HP
 E = 4cyl 1.8L (Gas) Jetta / GTI / R32 / Beetle 180HP
 F = 4cyl 2.0L (Diesel) Passat 134 HP
 G = 8cyl 4.2L (Gas) Phaeton 335HP
 H = 6cyl 3.2L (Gas) Jetta Wagon / Golf / GTI / R32 240HP
 I = 6cyl 2.8L (Gas) Jetta / Golf / GTI / R32 200HP
 J = 6cyl 2.8L (Gas) Passat 190HP
 K = 12cyl 6.0L (Gas) Phaeton 420 HP
 L = V10 5.0L (Diesel) Touareg 310HP
 M = 4cyl 2.0L (Gas) Jetta / Beetle 115HP
 N = W8 4.0L (Gas) Passat W8 270HP
 O = 4cyl 2.0L (Gas) Golf / GTI / Jetta Wagon / R32 115HP
 P = 4cyl 2.0L (Gas) Beetle 115HP
 Q = 8cyl 4.2L (Gas) Touareg 310 HP
 R = 4cyl 1.9L (Diesel) Golf / Jetta / GTI / R32 / Beetle 100HP

3V = Europe SUV
 3W = Europe Pass. Car
 9BW = Brazil Pass. Car

August 2003

SERIES:

<p>A = Phaeton 5 Seat Position B = Golf 2dr GL*** New Beetle GL*** New Beetle Conv. GL*** Phaeton 4 Seat Position Touareg V6 C = New Beetle GLS New Beetle Conv. GLS Touareg V8 D = New Beetle Conv. GLX GTI 2dr New Beetle GLX** New Beetle Conv. GLX E = Golf 4dr CL** Touareg V8 w/ Air suspension F = Golf 4dr GL New Beetle Turbo S*** Touareg V8x w/ Air suspension G = Golf 4dr GLS K = R32 2dr*** L = Passat W8 4Motion w/SG# M = Passat W8 Wagon 4Motion w/SG# N = Passat GL*** P = Passat GL Wagon*** R = Jetta GL*** Jetta Wagon GL*** Passat GLX</p>	<p>S = Jetta GLS Jetta Wagon GLS T = Passat GLX 4 Motion Jetta Wagon w/ Premium Package** U = Passat W8 4Motion V = Jetta GLI Passat Wagon GLS W = Passat Wagon GLX Y = Passat Wagon GLX 4Motion Z = Passat W8 4Motion Wagon Touareg V6</p> <p>** CAN Only *** US Only # Sport Group (Optional Equipt.)</p>
--	--

2004 Volkswagen V.I.N. Decoder



1	2	3	4	5	6	7	8	9	10	11	12	13	14	15	16	17
Country of origin	Manufacturer	Vehicle Type	Series	Engine	Restraint System	Model	(position 7 & 8)	Check Digit	Model Year	Assembly Plant	Sequential serial number (position 12 - 17)					
											This is the sequential production number of the specific vehicle.					

2004 Restraints:

- All Active - Dr/Pass
- 2 Front Air Bag - Dr/Pass
- 3 Side Impact Air Bags - Front
- 3 Dual Stage Front Air Bags - Dr/Pass
- 6 Side Impact Air Bags - Front
- 6 Side Curtain Air Bags
- 7 Side Impact Air Bags - Front
- 7 Dual Stage Front Air Bags
- 7 Side Impact Air Bags - Front
- 7 Side Curtain Air Bags

Check Digit: 0-9 or "X"

This is a calculated digit per NHTSA code to determine the validity of a complete Vehicle Identification Number.

Must follow steps in order!

- 1- Model Year (position #10)
Locate & use appropriate card.
- 2- Model Code (positions #7 & 8)
- 3- Vehicle Series (position #4)
- 4- Engine Code (position #5)

Model Year

- D = 1983
- E = 1984
- F = 1985
- G = 1986
- H = 1987
- J = 1988
- K = 1989
- L = 1990
- M = 1991
- N = 1992
- P = 1993
- R = 1994
- S = 1995
- T = 1996
- V = 1997
- W = 1998
- X = 1999
- Y = 2000
- 1 = 2001
- 2 = 2002
- 3 = 2003
- 4 = 2004

2005 Volkswagen V.I.N. Decoder

SERIES:

- | | |
|--|--|
| <p>A = Phaeton 5 Seat Position
Passat GLS #</p> <p>B = Golf 2dr GL ***
New Beetle GL ***
New Beetle Conv. GL ***
Phaeton 4 Seat Position
Touareg V6
Passat GLS 4Motion #</p> <p>C = New Beetle GLS
New Beetle Conv. GLS
Touareg V8
Passat GLS Wagon</p> <p>D = New Beetle Conv. GLX**
GTI
Passat GLS 4Motion Wagon
new Jetta (package 2)</p> <p>E = Golf 4dr CL**</p> <p>F = Golf 4dr GL
New Beetle Turbo S***</p> <p>G = Golf 4dr GLS</p> <p>L = Touareg V6 w/ Air suspension</p> <p>M = Passat GL***
Touareg V8 w/ Air suspension</p> <p>N = Passat GL Wagon***</p> <p>P = Touareg V10 w/ Air suspension
new Jetta (value edition)***</p> | <p>R = Jetta GL ***
Jetta Wagon GL***</p> <p>new Jetta ***
Passat GLX</p> <p>S = Jetta GLS / GLI
Jetta Wagon GLS
new Jetta (package 1)</p> <p>T = Passat GLX
4 Motion</p> <p>W = Passat Wagon GLX</p> <p>Y = Passat Wagon GLX
4Motion</p> <p>Z = Touareg V6/V8 with Sport Suspension</p> |
|--|--|
- ** CAN Only**
***** US Only**
Early Production may have used P

Country of origin	Manufacturer	Vehicle type	Series	Engine	Restraint system	Model (position 7 & 8)	Check digit	Model year	Assembly plant	Sequential serial number (position 12 - 17)						
1	2	3	4	5	6	7	8	9	10	11	12	13	14	15	16	17

5 = 2005

3 V W V H 6 9 M 4 5 M 0 0 8 8 9 8

3 V W V H 6 9 M 4 5 M 0 0 8 8 9 8

3 V W V H 6 9 M 4 5 M 0 0 8 8 9 8

3 V W V H 6 9 M 4 5 M 0 0 8 8 9 8

4 = Curitiba D = Bratislava
H = Hannover P = Mosel
8 = Dresden E = Emden
M = Mexico W = Wolfsburg

MODEL:

1C = New Beetle
1J = Golf*/ GTI / Jetta Wagon
1Y = New Beetle Convertible
3B = Passat
3D = Phaeton
7L = Touareg
9M = Jetta
1K = new Jetta

* Brazilian Golf displays as 9B in VW systems

MODEL:

A = 4cyl 2.0L Jetta 115HP
D = 4cyl 1.8L Beetle 150HP/Passat 170HP
E = 4cyl 1.8L Jetta/Jetta Wagon/Golf/GTI/Beetle 180HP
F = 4cyl 2.0L (Diesel) Passat 134 HP
T = 8cyl 4.2L Phaeton 335HP/5cyl 2.5L new Jetta 150HP
G = 6cyl 3.2L Touareg 237HP/5cyl 2.5L new Jetta 150HP
H = 6cyl 2.8L Jetta Wagon/Golf/GTI 200HP
H* = 6cyl 2.8L Passat 190HP
H = 12cyl 6.0L Phaeton 420 HP
K = 4cyl 2.0L Jetta/Beetle 115HP
L = 4cyl 2.0L Golf/GTI/Jetta Wagon 115HP
M = 4cyl 2.0L Beetle 115HP
M = 8cyl 4.2L Touareg 310HP
R = 4cyl 1.9L (Diesel) Jetta/Jetta Wagon/Golf/GTI/Beetle 100HP
T = 10cyl 5.0L (Diesel) Touareg 310HP
T = 4cyl 1.9 TDI new Jetta 100HP
U* = 6cyl 2.8L Passat 190HP

* Early production Passat vehicles may use the 'H' instead of 'U'

June 2005

2005 Volkswagen V.I.N. Decoder

Country of origin	Manufacturer	Vehicle type	Series	Engine	Restraint system	Model (position 7 & 8)	Check digit	Model year	Assembly plant	Sequential serial number (position 12 - 17)						
1	2	3	4	5	6	7	8	9	10	11	12	13	14	15	16	17

This is the sequential production number of the specific vehicle.

Model Year

- E = 1984
- F = 1985
- G = 1986
- H = 1987
- J = 1988
- K = 1989
- L = 1990
- M = 1991
- N = 1992
- P = 1993
- R = 1994
- S = 1995
- T = 1996
- V = 1997
- W = 1998
- X = 1999
- Y = 2000
- 1 = 2001
- 2 = 2002
- 3 = 2003
- 4 = 2004
- 5 = 2005

2005 Restraints:

- All Active - Dr/Pass
Front Air Bag - Dr/Pass
- 2 Side Impact Air Bags - Front
- 3 Advanced Front Air Bags
Side Impact Air Bags - Front
- 6 Side Impact Air Bags - Front
Side Curtain Air Bags
- 7 Advanced Front Air Bags
Side Impact Air Bags - Front
Side Curtain Air Bags
- 9 Dual Stage Front Air Bags
Side Impact Air Bags - Fr. Rr.
Side Curtain Air Bags
- 0 Advanced Front Air Bags
Side Impact Air Bags - Fr. Rr.
Side Curtain Air Bags
(Phaeton only)

Check Digit: 0-9 or "X"

This is a calculated digit per NHTSA code to determine the validity of a complete Vehicle Identification Number.

Must follow steps in order!

- 1- Model Year (position #10)
Locate & use appropriate card.
- 2- Model Code (positions #7 & 8)
- 3- Vehicle Series (position #4)
- 4- Engine Code (position #5)

2006 Volkswagen V.I.N. Decoder

SERIES:

- | | |
|---|---|
| <p>A = Phaeton 5 Seating Position
Passat auto. trans
Jetta 2.0T ***</p> <p>B = Golf 2dr GL***
Phaeton 4 Seating Position
Touareg V6
Passat 3.6L 4Motion</p> <p>C = Touareg V8
Passat 3.6L with Sport Pkg</p> <p>D = GTI
Jetta with Package 2***</p> <p>E = Golf CL**
Passat 2.0T/3.6L auto trans
w/Luxury Package</p> <p>F = Golf 4dr GL
Passat 4motion
w/Luxury Package</p> <p>G = Golf 4dr GLS
Passat 2.0T man. trans.</p> <p>H = Passat 4Motion with Sport Pkg</p> <p>K = Jetta 2.0T w/Package 1***</p> <p>L = Touareg V6 w/ Air suspension</p> <p>M = Touareg V8 w/ Air suspension
Jetta 2.0T w/Package 2</p> <p>N = Jetta with Premium Package**
Jetta 2.0T w/Package 3</p> <p>P = Touareg V10 w/ Air suspension
Jetta 2.5 (value edition)***
New Beetle
New Beetle Convertible</p> | <p>R = Jetta 2.5/TDI
New Beetle with
Package 1***</p> <p>New Beetle Convertible
with Package 1***</p> <p>New Beetle with
Luxury Package**</p> <p>New Beetle Convertible
with Luxury Package**</p> <p>S = Jetta 2.5/TDI with
Package 1***
Jetta with Luxury
Package**</p> <p>New Beetle with
Leather Package**</p> <p>New Beetle Convertible
with Leather Package**</p> <p>New Beetle with
Package 2***</p> <p>New Beetle Convertible
with Package 2***</p> <p>T = Jetta GLI***</p> <p>W = Jetta GLI w/Package 1</p> <p>X = Jetta GLI w/Package 2</p> <p>Z = Touareg V6 and V8
with Sport Suspension</p> |
|---|---|
- ** CAN Only**
***** US Only**
Early Production may have used P

Manufacturer/Make (position 1-3)			Series	Engine Type	Restraint System	Model (position 7 & 8)	Check Digit	Model Year	Plant of Mfg.	Sequential Production No. (position 12 - 17)						
1	2	3	4	5	6	7	8	9	10	11	12	13	14	15	16	17

6 = 2006

3 V W D F 3 1 K 0 6 M 6 0 3 3 9 0

WWW = Europe Passenger Car
WVG = Europe S.U.V.
3VV = Mexico Passenger Car
9BW = Brazil Passenger Car

See back

Calculate per
NHTSA Code

2006

4 = Curitiba H = Hannover
8 = Dresden M = Mexico
D = Bratislava P = Mosel
E = Emden W = Wolfsburg

MODEL:

- 1C = New Beetle
- 1Y = New Beetle
Convertible
- 1J = Golf / GTI
- 1K = Jetta
- 3C = Passat
- 3D = Phaeton
- 7L = Touareg

- E = 4cyl 1.8L Golf/GTI 180HP
- F = 8cyl 4.2L Phaeton 335HP
- F = 5cyl 2.5L Jetta/New Beetle/New Beetle Conv. 150HP
- G = 5cyl 2.5L Jetta/New Beetle/New Beetle Conv. 150HP
- J = 4cyl 2.0L Jetta 200 HP
- K = 4cyl 2.0L Passat 200HP
- K = 6cyl 3.2L Touareg 240 HP / 12cyl 6.0 Phaeton 450HP
- L = 4cyl 2.0L Golf/GTI 115HP
- M = 8cyl 4.2L Touareg 310HP
- R = 4cyl 1.9L (Diesel) Golf/GTI/New Beetle/New Beetle Conv. 100HP
- T = 10cyl 5.0L (Diesel) Touareg / 4cyl 1.9L new Jetta 100HP
- U = 6cyl 3.6L Passat 280HP
- W = 5cyl 2.5L New Beetle/New Beetle Conv 150HP

March 2005

2006 Volkswagen V.I.N. Decoder

Manufacturer/Make (position 1-3)			Series	Engine Type	Restraint Systems	Model (position 7 & 8)	Check Digit	Model Year	Plant of Mfg.	Sequential Production No. (position 12 - 17)						
1	2	3	4	5	6	7	8	9	10	11	12	13	14	15	16	17

This is the sequential
production number of the
specific vehicle.

Model Year

- G = 1986
- H = 1987
- J = 1988
- K = 1989
- L = 1990
- M = 1991
- N = 1992
- P = 1993
- R = 1994
- S = 1995
- T = 1996
- V = 1997
- W = 1998
- X = 1999
- Y = 2000
- 1 = 2001
- 2 = 2002
- 3 = 2003
- 4 = 2004
- 5 = 2005
- 6 = 2006
- 7 = 2007

2006 Restraints:

- All Active - Dr/Pass
Front Air Bag - Dr/Pass
- 0 Advanced Front Air Bags
Side Impact Air Bags - Fr. Rr.
Side Curtain Air Bags (Phaeton Only)
- 2 Side Impact Air Bags - Front
- 3 Advanced Front Air Bags
Side Impact Air Bags - Front
Side Curtain Air Bags
- 6 Side Impact Air Bags - Front
Side Impact Air Bags - Front
Side Curtain Air Bags
- 7 Advanced Front Air Bags
Side Impact Air Bags - Front
Side Curtain Air Bags
- 9 Dual Stage Front Air Bags
Side Impact Air Bags - Fr. Rr.
Side Curtain Air Bags

Check Digit: 0-9 or "X"

This is a calculated digit per NHTSA code
to determine the validity of a complete
Vehicle Identification Number.

Must follow steps in order!

- 1- Model Year (position #10)
Locate & use appropriate card.
- 2- Model Code (positions #7 & 8)
- 3- Vehicle Series (position #4)
- 4- Engine Code (position #5)