

# GOLF



This information was effective as at April 2009 and is subject to change without notice.

Visit us at [vw.co.za](http://vw.co.za)

©Volkswagen of South Africa



**Das Auto.**

NEW GOLF. FOR THE LOVE OF THE DRIVE.





THE JOURNEY STARTS HERE.



With driver assistance systems such as Electronic Stability Programme (ESP) including Brake Assist and Steering Pulse, Electronic Differential Lock (EDL), Electronic Brake-force

Distribution (EBD) and Anti-Spin Regulator (ASR) as standard, the New Golf is the car that redefines the car.

Active Safety Features:
ABS (Anti-lock Braking System) – prevents the wheels from getting locked in any braking situation, helping to keep the vehicle under control.
EBD (Electronic Brake-force Distribution) – senses over which axle of the vehicle the most weight is, and apportions greater brake force to that axle.
ESP (Electronic Stability Programme) – intelligently controls the engine management system to restore traction to individual wheels when it detects a loss of grip. Helps to correct oversteer, understeer and loss of control of the vehicle.
ASR (Anti-Spin Regulator) – excessive wheel spin caused by accelerating too hard on a low traction surface is automatically prevented through the engine management, providing improved grip for acceleration and cornering.
EDL (Electronic Differential Lock) – counteracts the natural tendency of the vehicle power to flow to the wheel/s with the least grip, and ensures that the engine power flows back through the differential to the wheel/s with better traction providing mobility.



STYLISH DESIGN COMES STANDARD WITH THE NEW GOLF.



TIMELESS DESIGN. BORN OF PERFECTION.





IT'S UNMISTAKABLY A GOLF.



## EXTERIOR.



The side mirrors are designed to minimise wind noise and resistance.



The ribs of the radiator grille are a distinctive hallmark of the New Golf. They have a black, high-gloss piano lacquer look, with chrome inserts on the Comfortline and Highline models, complementing the stylish appearance with a touch of sporty elegance.



The rear design will hold your gaze with its unique lines and perfectly integrated tail lights. An integral rear spoiler and diffuser optimise aerodynamics and provide the essential finishing touches.



The optional electric sliding/tilting glass roof on the New Golf is conveniently operated via automatic pre-selection: it moves into the desired position at the touch of a button and enables you to let in as much light and air as you choose.



Optimised for aerodynamics, the ergonomic door handles are contoured, sturdy and easy to grip.



Twin exhaust tailpipes hint at the state-of-the-art technology under the bonnet.



## WHEELS.



The 6J X 15 'Wellington' alloy wheel with size 195/65 R15 tyre highlights the reliability of the New Golf. Standard on the Trendline models.



The 6½J X 16 'Atlanta' alloy wheel with tyre size 205/55 R16 W provides a dynamic appearance. Standard on the Comfortline model.

The 7½J x 17 'Porto' alloy wheel with size 225/45 R17 tyre stands for even more agile handling. Standard for the Highline equipment line.

Safe driving and dynamic performance. The three wheel rims selected for the New Golf range ensure a perfect balance between powerful movement and driving dynamics.



## INTERIOR. DISCOVER THE INNER SECRETS OF THE NEW GOLF.



Superior luxury ensures that you always arrive relaxed at your destination. Height-adjustable comfort front seats with lumbar support create an ergonomic sitting position for your journey. Many features contribute to the elegant ambiance of the interior: the leather-covered steering-wheel, gear-lever knob and hand-brake lever grip; premium upholstery; decorative inserts; and new chrome-

look rotary light switches. Entertainment during the journey is provided by the 'RCD 310' radio with CD drive and MP3 player function. Extra comfort is afforded by a front centre armrest with storage box, and two vents and two cup holders for the rear passengers. The centre armrest between the rear seats has a through-loading facility making it easier to load bulky items of luggage. In addition

to these features, the Highline boasts sports seats of which the centre seat panels are in high-grade 'Alcantara', while the sides of the seats are upholstered in soft 'Dropmag' cloth, as well as a sports steering-wheel. An exclusive touch is added by matte chrome inserts and chrome appliqué on the mirror adjustment switch and window switches. Features for your comfort and convenience include a bag

hook in the luggage compartment and stowage pockets on the rear of the front seats. Ergonomic styling and outstanding comfort ensure maximum driving pleasure.

# INTERIOR.



Adjustable lumbar support helps to keep your back in a comfortable sitting position on long journeys.



The front centre armrest has a roomy storage box, essential for storing important items and keeping them within easy reach.



'Vienna' leather trim features on the centre and side seat panels. Colours to choose from are: Corn Silk Beige, Truffle and Titanium Black.



Chrome trim rings on the air vents further contribute to the elegant design.



Ergonomic chrome-look rotary light switches combine functionality with attractive design.



COMFORT.



The superior comfort built into the New Golf is benchmark. The multifunction display offers drivers information such as average speed, fuel consumption, journey time and auxiliary heater settings. You can also see whether the doors are open or closed. Ergonomic switch elements on the optional

leather-covered multifunction steering-wheel enable a radio and multifunction display to be operated with ease. The steering-column has reach and height adjustment so that the position of the steering-wheel can be set individually.



Two reading lights at both front and rear with chrome surrounds, add a touch of style to the Comfortline and Highline models.



Central locking with an interior locking function can be activated at the touch of a button.



Front electric windows are standard on the Trendline models and electric windows at front and rear are standard on all Comfortline and Highline models. Chrome finishing (pictured here) is standard on Highline models.



The switches have red 'night' design making it easier to operate them at twilight and in the dark.



From as low as 30km/h cruise control maintains the speed at your selected level, contributing to relaxed driving, particularly on long journeys.

AIR CONDITIONING AND MULTIMEDIA.



Feel refreshingly cool when it's hot, and toasty when it's cold. Compliment this with crystal clear sound and reliable navigation and you'll experience our premium standard at the touch of a button. The Climatic air conditioner has chrome trim rings and easy operation ensuring a

comfortable interior temperature at all times. Temperature selection is regulated automatically. The optional Climatronic air conditioner has individual temperature controls for the driver and front passenger so that each can choose a unique setting.



Standard across the range is the Media-In multimedia socket with USB interface which enables external audio sources to be connected and operated via the corresponding radio or optional Radio Navigation System.

The optimal 'RCD 510' radio includes a front-loading 6-disk CD changer which is MP3 compatible.



IT'S NOT ABOUT THE DESTINATION. IT'S ABOUT THE JOURNEY.



The optional large TFT display is an easy-to-use touch screen. The optional 'RNS 510' navigation system has an integrated 30 gigabyte hard disk for fast route calculation, 3D map display, and a split-screen function, enabling you to keep an

eye on your destination while driving. The 'RNS 510' is also a high-end radio system with a video and audio-enabled DVD drive.

## THE QUIETEST CAR IN ITS CLASS.



No effort has been spared to noticeably reduce ambient driving noise. Special dampening film in the windscreen, new seal concepts for the doors and windows and modifications to acoustically insulate the engine and

passenger compartments from each other. Even the design of the tyres and shape of the outside mirrors have been engineered to make the interior cabin a haven where nothing will disturb or distract your journey.



**LOWER EMISSIONS.  
TOMORROW'S TECHNOLOGY. TODAY.**



Volkswagen is already making a significant contribution towards protecting our environment and resources of tomorrow by combining mobility with sustainability for

people who care about the environment. Protecting our world. For everyone. Today.

ENGINES AND TRANSMISSION.



Golf has always been about the love of the drive. Driving enjoyment has never been better with benchmark gearbox technology and powerful engines. The combination of direct

petrol injection and intelligent charging technology enables the TSI petrol engines to work particularly effectively and combine advantages such as powerful output, high torque and low



The 6-speed manual gearbox has precise, short gearshift travel and a smooth gear change so that you stay in the right engine speed range at all times.

consumption. Twin-charger with double charging offered only by Volkswagen is used in the New Golf range. The new TDI diesel engine with common rail technology is a highly

efficient combustion engine. Your drive is now even more environmentally conscious with the 103kW TDI boasting a diesel particulate filter and a CO<sub>2</sub> emission of only 129g/km.



SAFETY.



Park Assist: The New Golf takes the effort out of parking. With the unique Park Assist system, which self steers into parking spaces, as well as an integrated rear camera, you can sit back while the car does the hard work.

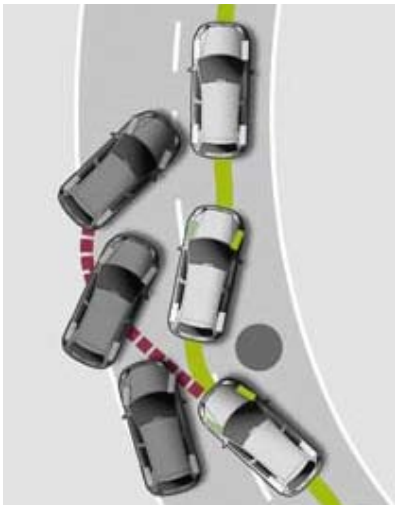
The New Golf exudes a sense of safety and well being, verified by its 5-star NCAP safety rating. In the event of an accident passengers can rely on the comprehensive airbag system. The New Golf includes airbags for the driver and front passenger (with deactivation function

for the front passenger airbag), a knee airbag at the front on the driver's side, and a curtain airbag system with side airbags for the driver and front passenger. The airbags are triggered by high-response crash sensors: if they register a collision, the airbag control unit activates



The anti-theft warning system has an interior monitoring function in the interior light module on the head lining. An electronic immobiliser and a tow-away warning are included.

The Electronic Stability Programme (ESP) prevents the vehicle breaking away in critical driving situations ensuring the vehicle has maximum directional stability. The New Golf also brings high-end driver assistance systems such as Anti-Spin Regulator (ASR) and Electronic Brake-force Distribution (EBD) to its class.



'ParkPilot' gives sound and visual signals to warn of obstacles at the front and rear when parking. With this optional driver assistance feature the audio signals become more rapid as obstacles are approached.

Fog, dust or heavy rain: the fog lights including turning lights improve illumination of the road in conditions of poor visibility. Xenon headlights with a wipe/wash feature is available as an option.



a gas generator which fills the airbags within 30 to 40 milliseconds. In this way, the risk of injury is significantly reduced, particularly in the neck area.



The optional 'Rear Assist' rear-view camera provides a clear image of what is behind the vehicle, as well as virtual markings to assist with reverse manoeuvring.



QUALITY. DOWN TO THE FINISHING TOUCHES.





PAINT.



Black  
Solid Paint  
A1



Shadow Blue  
Metallic Paint  
P6



Silver Leaf  
Metallic Paint  
7B



Blue Graphite  
Pearl Effect Paint  
W9



Candy White  
Solid Paint  
B4



Reflex Silver  
Metallic Paint  
8E



Shark Blue  
Metallic Paint  
5R



Deep Black  
Pearl Effect Paint  
2T



Tornado Red  
Solid Paint  
G2



United Grey  
Metallic Paint  
X6



Amaryllis Red  
Metallic Paint  
1U

The illustrations on this page can only be regarded as a general guide as the printing process cannot render the true depth and brilliance of the paint finishes with absolute accuracy. Please note that certain paint and trim combinations are not available.

TRIM.





CLOTH UPHOLSTERY.

Trendline



Latte Macchiato  
**'Roxy' cloth upholstery**  
**BA**



Titanium Black  
**'Roxy' cloth upholstery**  
**BB**

Comfortline



Titanium Black  
**'Merlin/Scout' cloth upholstery**  
**FW**



Latte Macchiato  
**'Merlin/Scout' cloth upholstery**  
**FX**

Highline

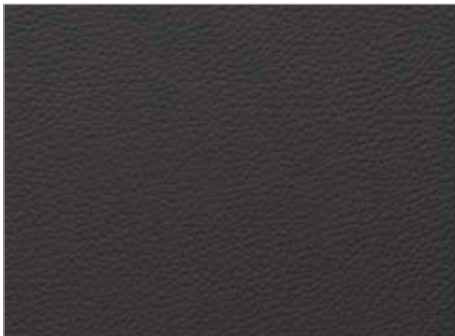


Titanium Black  
**'Alcantra/Dropmag' cloth upholstery**  
**XT**



Corn Silk Beige  
**'Alcantra/Dropmag' cloth upholstery**  
**XU**

LEATHER UPHOLSTERY.



Truffle  
**'Vienna' leather upholstery**  
**TL**



Titanium Black  
**'Vienna' leather upholstery**  
**TW**



Corn Silk Beige  
**'Vienna' leather upholstery**  
**YY**

Leather options available on Comfortline and Highline models only.

The illustrations on this page can only be regarded as a general guide as the printing process cannot render the true depth and brilliance of the paint finishes with absolute accuracy. Please note that certain paint and trim combinations are not available.



NEW GOLF.  
THE CAR THAT REDEFINES THE CAR.





SPECIFICATIONS.

X = Standard, O = Optional, - = Not available.

Δ = Standard with leather seat package and multifunction steering-wheel.

	1.6 Trendline Manual	1.4 TSI Trendline Manual	1.4 TSI Comfortline Manual	1.4 TSI Highline Manual	2.0 TDI Highline Manual
Engine					
Cylinders	4	4	4	4	4
Capacity (ℓ/cm³)	1.6/1595	1.4/1390	1.4/1391	1.4/1390	2.0/1968
Bore / Stroke (mm)	81 / 77.4	76.5 / 75.6	76.5 / 75.7	76.5 / 75.6	76.5 / 75.7
Valves (per cylinder)	2	4	4	4	4
Compression ratio	10.5	10	10	10	10
Turbo charged	-	X	X	-	X
Twincharger	-	-	-	X	-
Output (kW @ r/min)	75 @ 5600	90 @ 5000	90 @ 5000	118 @ 5800	103 @ 4200
Torque (Nm @ r/min)	148 @ 3800	200 @ 1500	200 @ 1500	240 @ 1500	320 @ 1750
Emissions level	EU2	EU5	EU5	EU5	EU5
CO <sub>2</sub> Emissions (g/km)	166	144	144	145	129
Transmission					
5-speed manual	X	-	-	-	-
6-speed manual	-	X	X	X	X
Performance					
Acceleration in seconds (0-100km/h)	11.3	9.5	9.5	8	9.3
Top speed (km/h)	188	200	200	220	209
Fuel Consumption (litres / 100km) EU Directive 99/102					
Urban cycle (Euro)	9.7	8.2	8.2	8.1	6.4
Extra-urban cycle (Euro)	5.6	5.1	5.1	5.2	4
Combined cycle (Euro)	7.1	6.2	6.2	6.3	4.9
Running Gear					
Sports suspension	-	-	-	X	X
Front axle:					
Independent suspension, McPherson struts	X	X	X	X	X
Anti-roll bar	X	X	X	X	X
Rear axle:					
Multi-link rear axle	X	X	X	X	X
Anti-roll bar	X	X	X	X	X
Brakes					
Front and rear discs	X	X	X	X	X
ABS (Anti-lock Brake System)	X	X	X	X	X
ASR (Anti-Spin Regulator)	X	X	X	X	X
ESP (Electronic Stability Programme) with brake assist and EDL (Electronic Differential Lock)	X	X	X	X	X
EBD (Electronic Brake-force Distribution)	X	X	X	X	X
Wheelrims / tyres					
‘Wellington’ 6Jx15 alloy 195/65 R15	X	X	-	-	-
‘Atlanta’ 6½Jx16 alloy 205/55 R16 W	-	-	X	-	-
‘Porto’ 7½Jx17 alloy 225/45 R17	-	-	-	X	X
Full size spare (alloy)**	X	X	X	X	X
Dimensions / Capacities					
Fuel tank (litres)	55	55	55	55	55
Luggage space (litres)**	350	350	350	350	350
Length (mm)	4199	4199	4199	4199	4199
Width (mm)	1786	1786	1786	1786	1786
Height (mm)	1479	1479	1479	1479	1479
Wheelbase (mm)	2578	2578	2578	2578	2578

	1.6 Trendline Manual	1.4 TSI Trendline Manual	1.4 TSI Comfortline Manual	1.4 TSI Highline Manual	2.0 TDI Highline Manual
Track - front (mm)	1540	1540	1540	1540	1540
Track - rear (mm)	1513	1513	1513	1513	1513
Ground clearance (mm)	89	89	89	89	89
Turning circle (m)	10.9	10.9	10.9	10.9	10.9
Unladen weight in kg (DIN)	1159	1215	1215	1271	1299
Seats					
Height adjustable driver’s seat	X	X	X	X	X
Height adjustable passenger’s seat	X	X	X	X	X
Adjustable front head restraints	X	X	X	X	X
Safety optimised head restraint system	X	X	X	X	X
Three adjustable rear head restraints	X	X	X	X	X
Manually adjustable lumbar support in front seats	-	-	X	X	X
Electrically adjustable lumbar support in front seats	-	-	Δ	Δ	Δ
Foldable rear seats (split 60:40)	X	X	-	-	-
Foldable rear seats (split 60:40) with centre armrest & load-through provision	-	-	X	X	X
Front centre armrest adjustable & extendable	-	-	X	X	X
Comfort seats	-	-	X	-	-
Sports seats	-	-	Δ	X	X
Leather seats	-	-	O	O	O
Seat heating	-	-	Δ	Δ	Δ
Windows					
Windscreen, tinted green	X	X	X	X	X
Heated rear window	X	X	X	X	X
Tinted glass all round	X	X	X	X	X
Electric windows - front	X	X	X	X	X
Electric windows - rear	-	-	X	X	X
Electric sunroof	O	O	O	O	O
Mirrors					
Dual electric, seperately heated	X	X	X	X	X
Convex passenger’s side / aspherical driver’s side	X	X	X	X	X
Colour-coded mirror housings	-	-	X	X	X
Anti-dazzle rear-view mirror - manual	X	X	-	-	-
Anti-dazzle rear-view mirror - automatic	-	-	X	X	X
Wiper System					
Two-speed with intermittent wipers	X	X	X	X	X
Rear wiper and washer, with intermittant control	X	X	X	X	X
Rain sensor	-	-	X	X	X
Safety and Security					
Driver and passenger front airbags with knee airbag for driver	X	X	X	X	X
Passenger airbag deactivation with key	X	X	X	X	X
Side airbags - front	X	X	X	X	X
Curtain airbags - front & rear	X	X	X	X	X
Height adjustable 3-point seat belts - front & rear	X	X	X	X	X
3-point centre rear seatbelt	X	X	X	X	X
Seatbelt warning buzzer & light - front seats	X	X	X	X	X

SPECIFICATIONS.

X = Standard, O = Optional, - = Not available.  
Δ = Standard with leather seat package and multifunction steering-wheel.

	1.6 Trendline Manual	1.4 TSI Trendline Manual	1.4 TSI Comfortline Manual	1.4 TSI Highline Manual	2.0 TDI Highline Manual
ISOFIX child seat preparation at the rear	X	X	X	X	X
High-level brake light	X	X	X	X	X
Side impact bars	X	X	X	X	X
Alarm with ultrasonic interior monitoring	X	X	X	X	X
Transponder immobilisor	X	X	X	X	X
Remote central locking	X	X	X	X	X
Tow-away and tilt protection	X	X	X	X	X
Front and rear door mounted warning reflectors	X	X	X	X	X
Dual tone trumpet hooter	X	X	X	X	X
Interior Features					
Multifunction computer	X	X	X	X	X
Ambient temperature display	X	X	X	X	X
White instrument illumination, dimmable & red night design for switched	X	X	X	X	X
‘Lights-on’ warning buzzer	X	X	X	X	X
Time delay interior light	X	X	X	X	X
Illuminated driver and front passenger vanity mirror	X	X	X	X	X
Reading lights - 2 front & 2 rear	X	X	X	X	X
3-spoke soft grip steering-wheel	X	X	X	-	-
3-spoke leather covered sports steering-wheel	-	-		X	X
Multifunction steering-wheel	O	O	O	O	O
Leather gear-shift knob & boot and hand-brake handle	-	-		X	X
Decorative dashboard & door side trim inserts - Titanium Silver metallic brushed	X	X	-	-	-
Decorative dashboard & door side trim inserts - Pyramid Black	-	-	X	-	-
Decorative dashboard & door side trim inserts - Alulook brushed	-	-	-	X	X
Servotronic®, speed-sensitive power steering	X	X	X	X	X
Cruise control	O	O	X	X	X
Height / reach adjustable steering-column	X	X	X	X	X
Door open warning display	X	X	X	X	X
‘Low fuel’ audible and display warning	X	X	X	X	X
Internal fuel filler flap release	X	X	X	X	X
2-zone Climatic air conditioner	X	X	X	X	X
2-zone Climatronic air conditioner	O	O	O	O	O
Glove compartment - lockable, cooled & illuminated	X	X	X	X	X
Multimedia socket for external audio source	X	X	X	X	X
RCD-310 radio/CD with MP3 compatibility and 8 speakers	X	X	X	X	X
RCD 510 6-disc CD changer, front loading and MP3 compatible	O	O	O	O	O
Satellite Navigation - high end, colour touch screen RNS-510	O	O	O	O	O
Park distance control - front & rear*	O	O	O	O	O
Parallel parking assist	O	O	O	O	O
Rear-view camera	O	O	O	O	O
Cup holders - front	X	X	X	X	X

	1.6 Trendline Manual	1.4 TSI Trendline Manual	1.4 TSI Comfortline Manual	1.4 TSI Highline Manual	2.0 TDI Highline Manual
Cup holders - rear	-	-	X	X	X
Storage pockets in rear of front seats	-	-	X	X	X
Sunglasses storage compartment	-	-	X	X	X
Floor mats - front & rear	-	-	-	X	X
Brake pad wear indicator	-	X	X	X	X
12V power socket in boot	-	-	X	X	X
Exterior Features					
Fully galvanised & laser welded body	X	X	X	X	X
Integrated rear boot spoiler	X	X	X	X	X
Colour-coded bumper	X	X	X	X	X
Black grained door handles	X	X	-	-	-
Colour-coded door handles, bumper and side mouldings	-	-	X	X	X
Xenon headlights with wipe / wash feature	O	O	O	O	O
Electric headlight height adjustment	-	-	X	X	X
‘Coming / leaving home’ lights function	-	-	X	X	X
Fog lights - seperate in front spoiler	-	-	O	X	X
Fog lights - rear	X	X	X	X	X
Twin exhaust pipe - visible	X	X	X	X	X
Guarantees					
3-year / 120 000km warranty	X	X	X	X	X
5-year / 90 000km AutoMotion Service Plan	X	X	X	X	X
15 000km service intervals	X	X	X	X	X
12-year anti-corrosion warranty	X	X	X	X	X

\* Electrically foldable mirrors in conjunction with Park Distance Control  
\*\* Boot space is reduced by 80 litres from 350 litres to 270 litres when selecting a full size spare wheel

The above information was effective as at April 2009, and is subject to change.

